

E-Z CUT INC.

"MK7" CARPET CUTTING MACHINE

WITH

RED LION FT/INCH COUNTER AND TAPESWITCH

**PLEASE NOTE: SOME OF THE FEATURES AND PHOTOS FOUND IN THIS
MANUAL MAY BE DIFFERENT THEN THE ONES ON YOUR MACHINE.**

CONTENTS

INTRODUCTION -----	3
MACHINE'S ARRIVAL AND PREPARATION-----	3
FOOTSWITCH, COMPRESSOR AND ELECTRICAL INSTALLATION-----	4
MAIN OPERATING PROCEDURES-----	6
REVERSE ROLLING PROCEDURES-----	12
VINYL PROCEDURES-----	14
AUTOMATIC CARPET SHUTTLE CONTROL SYSTEM (OPTIONAL)-----	15
IMPORTANT SAFETY AND MAINTENANCE TIPS-----	16
ROUTINE MAINTENANCE SCHEDULE-----	17
RECORD OF MAINTENANCE-----	18
GEARBOX OIL REPLACEMENT-----	19
BLADEHOLDER INSTRUCTIONS-----	20
PARTS LIST-----	21

INTRODUCTION

- Read these instructions carefully and thoroughly so as to ensure that you are familiar with the machine's features, general operating functions and the safety and maintenance requirements.
- Only authorized personnel who are familiar with the machine and its operation should use it. Never allow children near the machine.
- Keep the area of operation clear of any and all potential hazards.
- The following procedures are intended to acquaint you with the safe and efficient operation of your E-Z CUT Cutting Machine. Try to abide by the rule: "If at first you don't succeed, try again". This machine is a proven tool for improving your warehouse and cutting efficiency. Take your time, be patient, and enjoy the benefits of this machine for many years to come.
- If assistance is required or if any of the following procedures are unclear, please do not hesitate to contact an E-Z CUT representative directly at **1-800-661-5156**.

MACHINE'S ARRIVAL AND PREPARATION

Using the Lifting Bars, raise each corner of the machine onto its Caster Wheels. Once all 4 wheels are engaged, you can now move the machine to the desired position for operation on your warehouse floor. When you have located the machine to your desired position, use the Lifting Bars to lower the machine back down to its Legs so as to prevent any movement during actual operation.

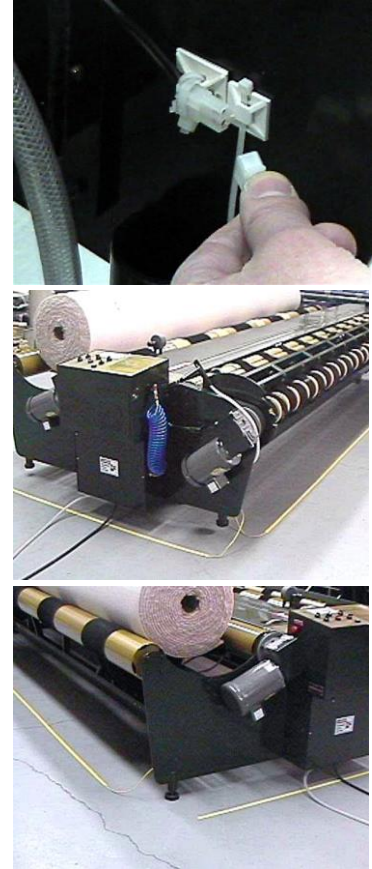


NOTE: When you are ready to lower the machine down onto its wheels, be sure each wheel is facing or is swung **inwards** to the middle of the machine and is **not** resting or jammed facing the outside edge of the machine. This will result in excess stress on the wheel itself and cause damage in a very short time. **Also, do not try to raise or lower the machine when you have a roll of carpet or vinyl on one or both cradles.**

FOOT SWITCH TAPE, COMPRESSOR AND ELECTRICAL INSTALLATION

In the box of accessories provided with the machine, you will find three lengths of Foot Switch Tape - two lengths that are each approx. 11 feet long and one length that is approx. 5 feet long. Once installed, you will be able to activate the machine's rollers by stepping on any section of the Foot Switch Tape. Install these three sections of Foot Switch Tape around the machine as follows:

- Lay out the short length (approx. 5 feet) of Foot Switch Tape on the floor along the Front of the machine, with the plug end on the right hand side. Plug this section into any one of the two mating plugs located on the right inside edge of the machine's front panel.
- Lay out one of the two longer lengths (approx. 11 feet) of Foot Switch Tape on the floor along the Right Side of the machine, with the plug end closest to the front of the machine. Plug this section into the remaining mating plug on the right inside edge of the machine's front panel.
- Lay out the second of the two longer lengths of Foot Switch Tape on the floor along the Left Side of the machine, again with the plug end closest to the front of the machine. Plug this section into the one mating plug located on the left inside edge of the machine's front panel.



NOTE: Depending on your operation, the location of the machine, and whether or not you move the machine around on a regular basis, you may want to secure the sections of Foot Switch Tape to the floor with the use of duct or masking tape. By taping the Foot Switch Tape to the floor, you will avoid possible twisting of and reduce potential damage to the Foot Switch Tape. Should you need to move your machine for cleaning purposes, remove the duct/masking tape from the Foot Switch Tape, lift and drape the Foot Switch Tape sections onto the machine, and then re-secure the Foot Switch Tape to the floor with more duct/masking tape when you re-locate the machine. **DO NOT detach the Foot Switch Tape from the plug connections on the machine, as continued plugging/unplugging will cause damage to the plug ends.**

- Connect the white plastic air hose to your Air Compressor & Fitting. Remember, your air supply should meet the following **minimum** specifications:

**2 H.P. Motor
10 -12 Gallon Tank**

**120 Psi
5-8 CFM**

- Hook-up the machine's power cord into the following power source (Hardwired or Plug).

220V (Single Phase) / 60 Hz / 20 Amp

- Test the activation of the rollers by turning both Roller Switches to FWD and then press and hold the Jog Button. The rollers should now turn and then stop when you remove your finger from the button. Next, with the Roller Switches still in FWD, step on the Foot Switch Tape. Again, the rollers should turn and then stop when you remove your foot from the Foot Switch Tape.
- Check that all 3 speed levels (Low, Medium & High) of the machine are working along with both roller directions (FWD & REV).
- Check that the Cutting Bar is working by pushing & holding the Cutter Switch to FWD. You will hear a Warning Beeper for approximately 3 seconds prior to the Cutter being activated. This is your notice to keep hands and any other potential hazards clear of the Cutting Track. Since it is a Two-Way Cutter, you can make your next cut by pushing & holding the Cutter Switch to REV.

IMPORTANT NOTES:

- **The Cutting Bar only takes about 3 seconds to travel the length of the Cutting Track. Should you ever have to stop the Cutter, just release the Cutter switch and the Cutter will stop immediately. Use extreme caution, care and common sense when operating this Cutter!**
- **Be sure to use extra care and caution when loading/unloading rolls on the Left Hand Side Cradle so as to avoid damaging the two sets of "Shuttle Arms" located in the middle of this Cradle.**
- **It is best to always turn the Rollers Switches "OFF" when the machine is not in use. In addition, your machine is equipped with an "Emergency Stop" button located on the side of the control Panel. By pressing this button, you disable the machine instantly. To re-set the machine, just turn the button until it pops back out.**



MAIN OPERATING PROCEDURES

LOADING THE ROLL OF CARPET

Place the roll on the Left Hand Side Cradle and ensure that the "Feed Edge" is coming from the Bottom towards the Counter with the "Pile" facing Up. Whenever possible load rolls from the **rear** of the machine to avoid damaging the control panel. **Never measure with the "Pile" facing Down as this will result in inaccurate readings.** For best results turn the Left Hand Side Rollers in Reverse (REV), press the Foot Switch Tape or Jog Button, and allow the roll to rotate a few turns until it tightens



PREPARING TO MEASURE

Lift the Counter Weight Arm to the Up position. Advance the carpet towards the Right Hand Side by switching both the Left and Right Side Rollers to Forward (FWD), and depressing the Foot Switch Tape or Jog Button. You may find it easier to get the roll started by using the Jog Button instead of the Foot Switch Tape. Stop the advancement of the carpet at the Cutting Track and lower the Counter Weight Arm down onto the carpet.



PROGRAMMING THE COUNTER

➤ MAIN SCREEN

Display reads:

C 0.00
P2 10.00



➤ Ensure you are in the "C / P2" Main Screen as shown in the photo above.








➤ If at any time you are not on the "C / P2" Main Screen simply press the  (<ESC) button until you return to it.


➤ The Top Row (C) will indicate the actual length of the flooring that will be measured while the Bottom Row (P2) is where you can program the desired or pre-set length you wish to measure.

➤ **PRE-SET SCREEN**

Display reads:
PROCESS
P2 10.00




- Press the  (**PRS**) button to get into the “**PROCESS**” Pre-Set Screen.
- Press the  (**SEL>**) button and you will notice that the first digit position on the Bottom Row (**P2**) will begin to flash. Press the  (**UP**) or  (**DOWN**) buttons to change the value of the flashing digit. Press the  (**<ESC**) or  (**SEL>**) buttons to move to the next digit.
- When you have reached the desired values at each position, press the  (**ENT**) button and this will lock in your Pre-Set amount. If you have made an error or wish to make any changes, just start the process over again.

- Press the  (**<ESC**) button and this will return you to the "C / P2" Main Screen. You will notice that the Bottom Row (**P2**) will have the Pre-Set amount that you have programmed into it.

➤ **EXAMPLE**

Display reads:
C 0.00
P2 18.06



- For Example if you need to make an **18’ 6”** cut, simply program the Pre-Set length in the “**PROCESS**” Pre-Set Screen to read “**18.06**”.
- Advance or reverse the carpet so it is lined up with the Cutting Track. Once aligned with the Cutting Track, press the  (**F2/RST**) button to clear the Top Row (**C**) to “0.00”.

STARTING THE ROLL UP PROCESS

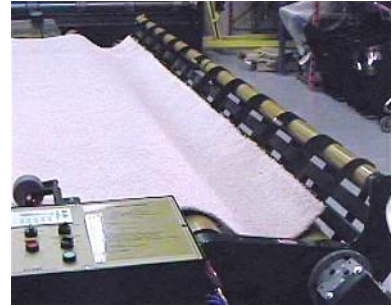
With both Rollers in the FWD position and the Counter Weight Arm in the Down position, advance the carpet by depressing the Foot Switch Tape or Jog Button as well as assisting the carpet by hand until it is into the Right Hand Side Cradle and stop it's progress when it advances just past the middle of the Right Hand Side Cradle (approx. 4 to 6 inches). Although it is not necessary, should you require a core, it can be placed on top of the carpet in the Right Hand Side Cradle at this time.

ROLLING UP THE CARPET

- For starters, you are best to keep the machine in Low speed until you get more comfortable and familiar with how the machine works.
- With both rollers in FWD, press the Air Assist Button located at the top of the Roll-Up Handle on the Right Hand Side Cradle with your right thumb.
- Simultaneously, lift the Cradle up and over top of the carpet and release your thumb from the Air Assist Button.
- Step on the Foot Switch Tape or press the Jog Button to advance the carpet further into the Right Hand Side Cradle. You will notice that the carpet will curl over and start to re-roll itself.
- Once you have rolled up approx. 3 to 5 feet (3 to 5 turns), you can pull the Right Hand Side Cradle back to it's **Normal** locked position. **Do not press the air assist button to do this.**
- You can now increase the speed to Medium or High, whatever you are more comfortable with at this time.

NOTES:

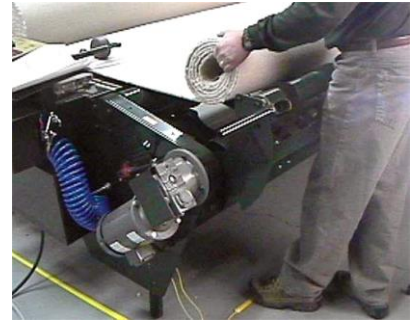
- Once you practice more and become more familiar with the machine, these steps will become more integrated and much easier to perform.
- If the carpet does not seem to want to roll up in the Right Hand Side Cradle immediately, just stop the process, reverse the carpet back a little and start over. You may have to jog/bounce the Right Hand Side Cradle Handle a little bit during the roll-up to assist in getting the carpet started. Also, if you experience "buckling" of the carpet during this process, just turn the Left Hand Side Rollers to OFF for a split-second and then back to FWD once the buckling is removed. **Be Patient It Will Work!**
- Should you prefer a more loose roll-up of your carpet, just pull the Right Hand Side Cradle Handle back earlier than after 3 to 5 turns or don't even engage the Right Hand Side Cradle at the start. **Experiment to see what works best for you.**



IMPORTANT NOTE: IF YOU CONTINUE THE ROLL-UP PROCEDURE BY PRESSING THE JOG BUTTON INSTEAD OF THE FOOT SWITCH TAPE, THE MACHINE WILL NOT STOP AUTOMATICALLY AT YOUR PRE-SET LENGTH. BE SURE TO USE THE FOOT SWITCH TAPE AFTER YOU HAVE GOT THE CARPET STARTED SO THIS FUNCTION CAN PERFORM PROPERLY.

ROLLING UP THE CARPET STRAIGHT


As long as your floor and machine are level, the Adjustable Legs are even and the main roll on the Left Hand Side Cradle is rolled up relatively straight, then the carpet will roll-up fairly straight on the Right Hand Side. If any of these factors do not apply, they should be corrected immediately. Minor coning or telescoping problems can be overcome quite easily. Have the operator move along the Right Hand Side of the machine near the front corner. As the carpet continues to come across and roll-up, the operator can adjust the carpet by hand in the cradle much like he would if he were rolling it up on the floor. This procedure eliminates any serious coning and as long as the carpet rolls up relatively straight on the Right Hand Side, your cut will be straight and square.



AUTOMATIC SLOW DOWN

Your machine has an Automatic Slow Down Mode programmed into the Counter. If the machine is programmed for **20.00**, the machine will automatically slow down to Low speed at about **18.06** and will stop automatically at exactly **20.00**. **The Automatic Slowdown and Stop will only work if you are advancing the carpet with the Foot Switch Tape and not the Jog Button.**

NOTE: If you wish to give a couple of extra inches to the programmed cut, you can do so by pressing the Jog Button. If you try to step on the Foot Switch Tape, the machine's rollers will not work because they are locked out after the pre-set length is reached. To re-activate the Foot

Switch Tape, press the  (**R**) button on the counter.

PRIOR TO CUTTING

Prior to making your cut, there may be a slight buckle of carpet on the table. To eliminate this, turn the Right Hand Side Rollers into FWD and the Left Hand Side Rollers in REV, then tap the Jog Button.

CUTTING THE CARPET

➤ Turn Both Rollers Switches to the "OFF" positions - **VERY IMPORTANT!**

➤ Clear the area of any potential hazards (i.e. someone may be leaning on the machine or have their hand in the path of the Cutting Bar).

➤ Push and hold the Cutting Bar's Toggle Switch to FWD.

➤ Once the Cutter has completed the cut, release the Toggle Switch.

➤ Because it is a Two-Way Cutter, you do not have to return the Cutting Bar back to the home end of the machine for the next cut.



NOTE: Use extreme caution and common sense when activating the cutting bar. Should you need to stop the cutting bar's progress at any time during a cut, just release the toggle switch immediately.

WRAPPING THE ROLLS

To wrap your cut piece, turn the Right Hand Side Rollers to FWD and the Left Hand Side Rollers to OFF. Secure your stretch film or plastic under the edge of the carpet, step on the Foot Switch Tape along the Right Hand Side of the machine, and wrap the roll accordingly. The same can be done to the balance roll on the Left Hand Side by turning the Left Hand Side Rollers in REV and the Right Hand Side Rollers to OFF.



REMOVING/DUMPING ROLLS FROM THE MACHINE

Once cutting and wrapping is complete, you can now remove the cut piece from the machine's Right Hand Side Cradle without the need of a lift truck. Switch both the Left Hand Side and the Right Hand Side Rollers to OFF. Press the Air Assist Button on the Right Hand Side Cradle Handle and gently lower the cradle to its **down** position. Push the roll off of the machine and return the Right Hand Side Cradle to its **Normal** locked position

NOTE: Heavier rolls and cuts should be removed with a lift truck, and not by way of the Dumping Mechanism, for safety and to avoid damage to your machine.



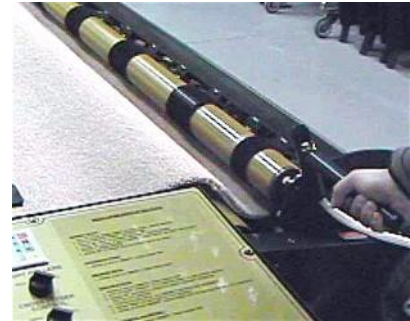
IMPORTANT NOTES:

- Although the Load Cradle (Left Side) is designed to handle heavy rolls up to 36 inches in diameter, the Roll Up Cradle (Right Side) in its Normal position is designed to accept rolls only up to 24 inches in diameter. However, for larger rolls, you can shift the Right Hand Side Cradle to its Expanded Cradle position. In this expanded position, the Right Hand Side Cradle can now handle larger rolls (up to approximately 32 inches in diameter). **ATTEMPTING TO ROLL UP ROLLS LARGER THAN THIS CAN CAUSE SERIOUS DAMAGE TO THE MACHINE AND IS NOT RECOMMENDED!**
- The roll capacities noted above along with the machine's overall performance will vary depending on the roll's weight, how tightly it is rolled, and whether or not it is slightly compressed or oblong around it's circumference.

REVERSE ROLLING PROCEDURES

When **REVERSE ROLLING** the carpet, follow the instructions listed in the **MAIN OPERATING PROCEDURES** section for **LOADING THE ROLL OF CARPET**, **PREPARING TO MEASURE** and **PROGRAMMING THE COUNTER**. Follow the instructions below for **STARTING THE ROLL UP PROCESS**, **ROLLING UP THE CARPET** and **MEASURING THE TAIL END OF THE CARPET** because they are done differently than previously listed. Then refer back to **ROLLING THE CARPET STRAIGHT**, **CUTTING THE CARPET** and **REMOVING THE ROLLS FROM THE MACHINE** as previously illustrated in the **MAIN OPERATING PROCEDURES** section of this manual.

- When Reverse Rolling or Back Rolling carpet, a cardboard core (no wider than 4 inches in diameter) **must** be used.
- With both Rollers in FWD, advance the carpet onto the Right Hand Side Cradle bringing the edge of the carpet to rest at about the middle of the cradle.
- Place your core into the cradle and flip the carpet up so it rests on top of and covers the left half of the core.
- Engage the Right Hand Side Cradle by raising it up and folding the cradle over the carpet so it pinches the carpet up against the core.



ROLLING UP THE CARPET

➤ With the carpet pinched in place and the Roller Speed in LOW, switch the Right Hand Side Rollers to REV and keep the Left Hand Side Rollers in FWD.

➤ Tap the Jog Button until the carpet starts to wrap itself around the core and completes about 3/4 of its first turn.

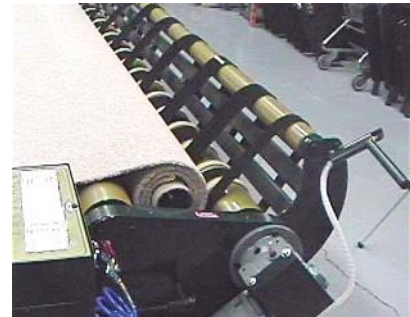
➤ At this time, lift up on the Reverse Roll Pressure Plates Handle located to the right of the main control panel. This will engage the series of stainless steel plates that run the length of the machine near the middle of the Right Hand Side Cradle.

➤ While gently holding this Handle in place, press the Jog Button to continue the advancement of the carpet. You will only have to hold the Handle in place for 1 or 2 seconds at which time you will see the plates actually force the carpet around the core. Once you see the carpet is starting to wrap around the core, release the Handle to its original position.

NOTE: If you are working with a stiffer backed carpet you may get better results by tapping the Jog Button instead of pressing and holding it down.

➤ Continue to press the Jog Button or Foot Switch Tape and hold the Right Hand Side Cradle in the folded up position until you get 3 to 5 turns on the core, then return the Right Hand Side Cradle to its original **normal** locked position.

➤ Adjust the Roller Speed to whatever you prefer.



NOTES:

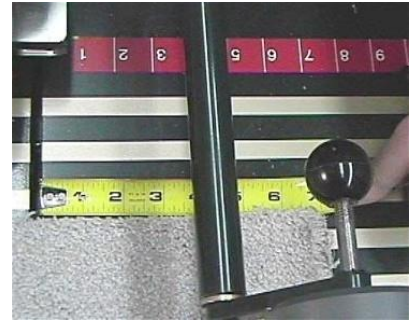
➤ Remember the difference between using the Jog Button and the Foot Switch Tape with respect to the Pre-set programmed length - using the Jog Button will override this feature.

➤ Again, if the carpet buckles slightly during the initial start-up, you can eliminate this buckling by momentarily stopping the Left Hand Side Rollers and then quickly turning them back to FWD.

➤ **Reverse rolling takes a little more practice and patience, take your time and don't give up.**

MEASURING THE "TAIL END" OF THE CARPET

- You must remember that when measuring a full or partial roll, you have to take into account the last section or "tail end" of carpet that doesn't get measured by the Counter after the material passes over the Counting Wheel. Using a tape, measure the section of material between the back edge of the carpet and the Cutting Track, and add it to the amount that is already recorded on the Counter's Screen.
- To measure a full roll of carpet follow the “MEASURE ONLY” instructions on page 20 of this manual.



VINYL PROCEDURES

Although Vinyl flooring can be handled in the same fashion as previously detailed in the carpet procedures, some of these exceptions or options may apply:

- Instead of loading the roll on the Left Hand Side with the edge coming up from the **Bottom**, you can also load the material with the edge coming over the **Top** with the "**Pattern**" facing up. In order to advance the vinyl across to the Right Hand Side, you will have to switch the Left Hand Side Rollers into REV and provide a little more manual assistance to help the material get started. This is a little tougher procedure and takes practice, but will obviously enable you to detect any flaws or damage to the vinyl's surface during operation.
- To avoid damaging your resilient vinyl flooring, we do not recommend using the "Dumping" mechanism on the machine's Right Hand Side. Dropping the roll to the floor from the machine's cradle can cause damage to the flooring, even if it is wrapped correctly. The use of a lift truck or manually by one or two employees is recommended for removing the roll from the machine.

AUTOMATIC CARPET SHUTTLE CONTROL SYSTEM

MANUAL SETTING

In order to use the **Cross Feeder System**, the **Cross Feeder Control Switch** must first be in the "MAN" (Manual) position.

When activated, the **Cross Feeder Switch** will engage the pneumatically controlled Carpet Shuttle Control arms located in the middle of the Load Side Cradle. This feature will actually "twist" the roll of carpet that is in the Load Side Cradle so as to shift it from the back of the machine towards the front, or vice-versa, depending on which way you turn the switch. This will aid the roll-up of your carpet in the event that you have a roll that tends to telescope or walk. When the switch is released, the arms will return to their normal centred position.



NOTES:

- Once you learn this feature, you will notice that you do **not** have to activate the **Cross Feeder Switch** for a very long time in order to cause the roll to shift accordingly.
- Practice on this feature with a smaller roll until you become accustomed to how it works and prior to utilizing it during a "real" measure and/or cut.
- **Do not hold and activate the Cross Feeder Switch for a continued and/or excessive length of time, especially on larger rolls, as it can cause damage to your machine's motors and shuttle system.**

AUTOMATIC SETTING

When the **Cross Feeder Control Switch** is in the "AUTO" (Automatic) position, the Carpet Shuttle Control arms will automatically engage to shift the carpet as it comes across the table. The "AUTO" control uses the two "Photo Sensor Eyeholes" that are located on the top of the table between the counting wheel and the control panel. These "Eyes" sense the edge of the carpet and automatically adjust the control arms to ensure the carpet edge stays in between the two and comes across straight.



IMPORTANT NOTES:

- **The carpet edge must always be positioned and lined up between the two "Eyes" prior to beginning a measurement.**
- **The Automatic Cross Feeder Control System will not work well if the carpet you are measuring has a salvage edge or if the "Eyes" are dirty or covered with debris. These situations will cause the Photo Sensor Eyes to react improperly and thus cause the carpet to move erratically.**
- **The "AUTO" feature should not be used in High Speed.**
- **Because the Automatic Cross Feeder Control System can be disorienting for new users, we recommend that it not be used until the operator is skilled in using the Cross Feeder System in the Manual position.**



IMPORTANT SAFETY AND MAINTENANCE TIPS

- **USE EXTREME CAUTION AND CARE WHEN OPERATING THE MACHINE AT ALL TIMES. KEEP THE OPERATING AREA CLEAR OF ALL UNAUTHORIZED PERSONNEL AND POTENTIAL HAZARDS. YOUR "E-Z CUT" IS A MACHINE NOT A TOY, NEVER ALLOW CHILDREN NEAR IT!**
- **WHEN PERFORMING ANY MAINTENANCE WORK ON THE MACHINE, ALWAYS DISCONNECT THE MACHINE FROM BOTH ITS POWER SOURCE AND AIR SUPPLY.**
- **ALWAYS MAKE SURE THE MACHINE IS LEVEL DURING OPERATION. AN UNLEVEL MACHINE MAY CAUSE CONING AND WALKING OF THE MATERIAL, AND DAMAGE TO THE MACHINE MAY OCCUR.**
- **DO NOT RAISE THE MACHINE ONTO ITS WHEELS OR MOVE IT WHILE LOADED, DAMAGE TO THE MACHINE MAY OCCUR.**
- **BE SURE TO USE EXTRA CARE AND CAUTION WHEN LOADING OR UNLOADING ROLLS ON THE LEFT HAND SIDE CRADLE TO AVOID DAMAGING THE SHUTTLE LOCATED IN THE MIDDLE OF THE CRADLE.**
- **WHEN HANDLING LARGER OR HEAVIER ROLLS, DO NOT USE "HIGH" SPEED. ONLY OPERATE IN THE "LOW" OR "MEDIUM" SPEEDS.**
- **WHEN THE MACHINE IS NOT IN USE, SWITCH BOTH ROLLERS TO "OFF" AND ENGAGE YOUR "EMERGENCY STOP BUTTON". DISCONNECT THE MACHINE FROM ITS POWER SOURCE WHEN LEFT OVERNIGHT.**
- **IN THE EVENT OF AN ELECTRICAL STORM, THE MACHINE SHOULD BE UNPLUGGED TO PREVENT POTENTIAL DAMAGE TO THE ON-BOARD ELECTRONIC EQUIPMENT.**
- **WHEN THE MACHINE IS NOT IN USE, ALWAYS KEEP THE "COUNTER WEIGHT ARM" (LOCATED DIRECTLY ABOVE THE COUNTING WHEEL) IN THE "UP" POSITION.**
- **THINK BEFORE YOU ACT AND USE COMMON SENSE! SHOULD YOU BE UNSURE WITH ANY OF THE MACHINE'S OPERATING FEATURES, CALL OUR OFFICE DIRECTLY AT TOLL FREE 1-800-661-5156.**

ROUTINE MAINTENANCE SCHEDULE

DAILY:

- Check for any oil leakage from the gearboxes. If there is a leakage, discontinue the use of the machine and call E-Z CUT immediately
- Use an “Air Pressure Hose” or a “Heavy Duty Vacuum Cleaner” to clean out floor covering residue, fibres, and dust build-up from the surface of machine. Pay extra attention to both of the Cradles, the Cradle Belts and the Cutting Track.

BI-WEEKLY:

- Clean Under Front and Back Cutting Track Cover Plates by removing the cover plates and cleaning out floor covering residue, fibres, and dust build-up.
- Make sure there is no substantial grease leakage from the Cutting Tracks Air Cylinder.
- Check that the screws that secure the Bladeholder to its base are snug.

SCHEDULE “A” MAINTENANCE: (Perform Schedule “A” Maintenance after the first 3 and 6 months of operation and then every 6 months thereafter):

- Use the 1/8-inch and 5/32-inch Set Screw Wrenches (found in the back of this manual) to check that all visible Set Screws are tight. Pay particular attention to each Roller Bearing and each Gearbox Shaft.
- The Large Roller located in the centre of the Right Hand Side of the machine has 4 small holes located at 4 and 12 inches in from both ends of the Roller. Insert the 1/8 inch Set Screw Wrench into these holes and ensure that the Set Screws inside are tight.
- Check all Bearing Holder Bolts and Nuts.
- De-grease Cradle Locking Positions on Roll-Up side.
- Grease all 4 Caster Wheels.

SCHEDULE “B” MAINTENANCE: (Perform Schedule “B” Maintenance yearly):

- Change the oil in the Gearbox (refer to page18 of this manual).
- Check the Cutter's Cable tension by first positioning the Cutting Bar at the far end of the machine and removing the top cover panel at the front of the machine. Press down on the portion of Cable that is just past the front pulley. There should be about .5 to 1inch of 'play' in the Cable. If there is more 'play' in the Cable or it appears very loose, contact an E-Z CUT representative immediately.

NOTES:

- The Roller Bearings are factory greased and **do not** require regular greasing.
- **In order to maintain your machine's optimum performance and to ensure any potential machine problems are covered under the "E-Z CUT WARRANTY", the above procedures must be followed and adhered to at all times.**

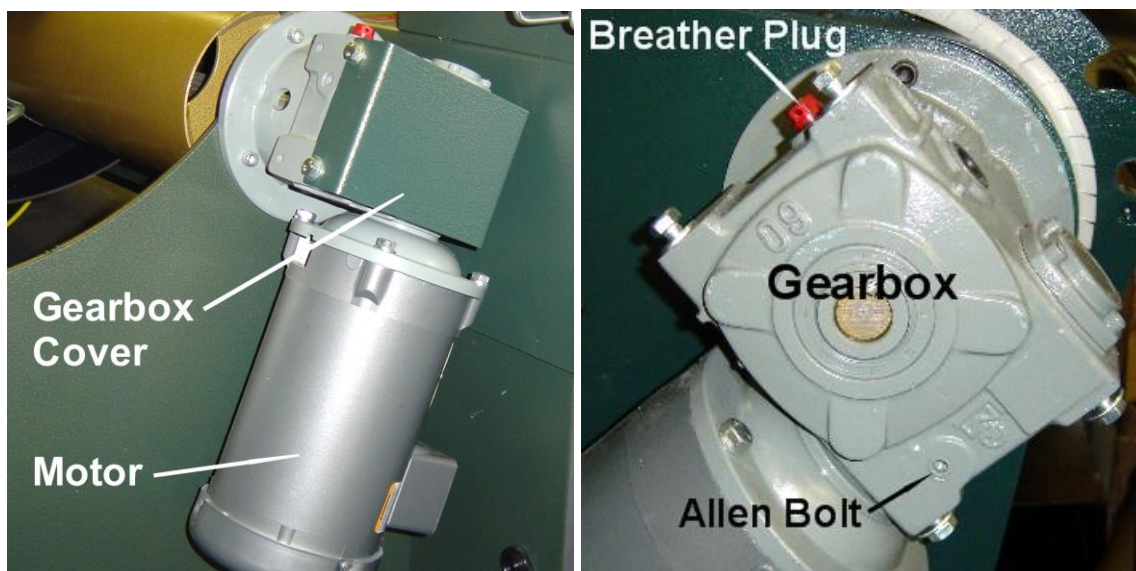
RECORD OF MAINTENANCE

Record Date of Delivery:			
Length Of Time Since Delivery:	Maintenance Required:	Maintenance Performed By:	Date:
3 Months	Schedule A		
6 Months	Schedule A		
1 Year	Schedule A And B		
1 Year 6 Months	Schedule A		
2 Years	Schedule A And B		
2 Years 6 Months	Schedule A		
3 Years	Schedule A And B		
3 Years 6 Months	Schedule A		
4 Years	Schedule A And B		
4 Years 6 Months	Schedule A		
5 Years	Schedule A And B		
5 Years 6 Months	Schedule A		
6 Years	Schedule A And B		
6 Years 6 Months	Schedule A		
7 Years	Schedule A And B		
7 Years 6 Months	Schedule A		
8 Years	Schedule A And B		

IMPORTANT NOTES:

- Always perform the daily and bi-weekly maintenance in addition to following this long-term maintenance schedule
- Continue to perform scheduled maintenance for the life of the machine.

GEARBOX OIL REPLACEMENT



Use 9 to 11 ounces of oil per gearbox (**IMPORTANT! IF YOUR GEARBOX IS STAMPED “HUBCITY” ONLY USE 7 OUNCES OF OIL**). Due to the mounting configuration, the window on the gearbox cannot be used to monitor the amount of oil however you must ensure that the gearbox is never more or less than half filled with oil at all times! Quaker State Synthetic Gear Oil is recommended but any brand between 75W to 90W Synthetic Gear Oil or Synthetic High Pressure Gear Oil is acceptable.

1. Disconnect the electrical power supply to your machine.
2. Remove the gearbox cover. Cover the motor with a rag so oil does not seep into it. Remove the bottom front Allen bolt to drain oil. Ensure that the Allen bolt is put back in place when done draining.
3. Remove the red breather plug on top of the gearbox and fill with 9 to 11 ounces of oil (**IMPORTANT! IF YOUR GEARBOX IS STAMPED “HUBCITY” ONLY USE 7 OUNCES OF OIL**). Ensure that the gearbox is about half filled with oil and reinstall the top breather plug and the gearbox cover.
4. Repeat steps 1, 2 and 3 to change the oil in the gearbox on the opposite side of the machine.
5. Ensure all plugs are in place, remove the rag from both motors and reinstall both gearbox covers before reconnecting power and operating the machine again.

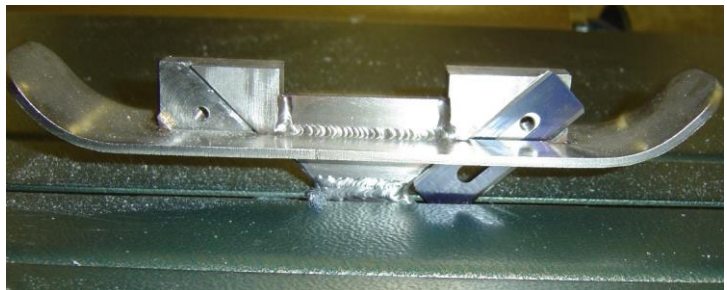
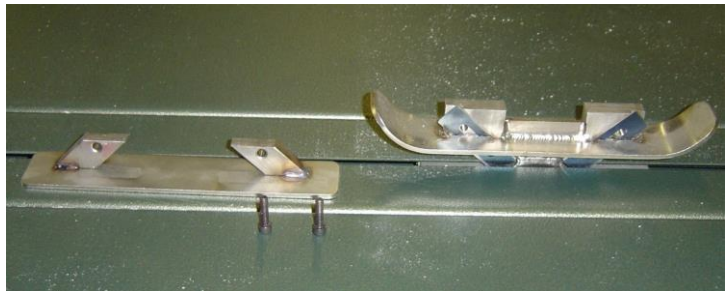
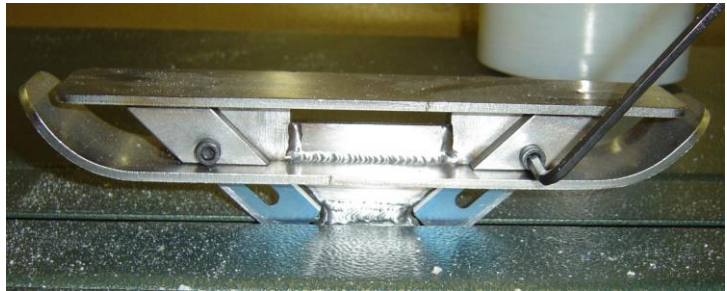
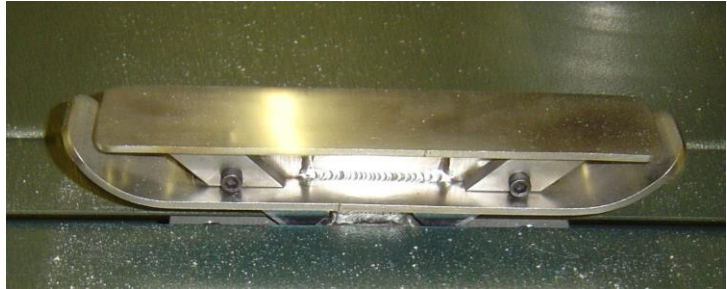
BLADEHOLDER INSTRUCTIONS

- Remove the Setscrews with the 5/32 Allen wrench found at the back of the operating manual.
- Lift and remove the top portion of the Bladeholder
- Remove the Blades by sliding them out of the slots.
- With the Blades removed, clean out any carpet debris or fibers from both, the top and bottom portions of the Bladeholder.
- Rotate the old Blades to a fresh corner or dispose of them and replace with new Blades.

Re-position the top portion of the Bladeholder and re-secure it into place with the Setscrews.

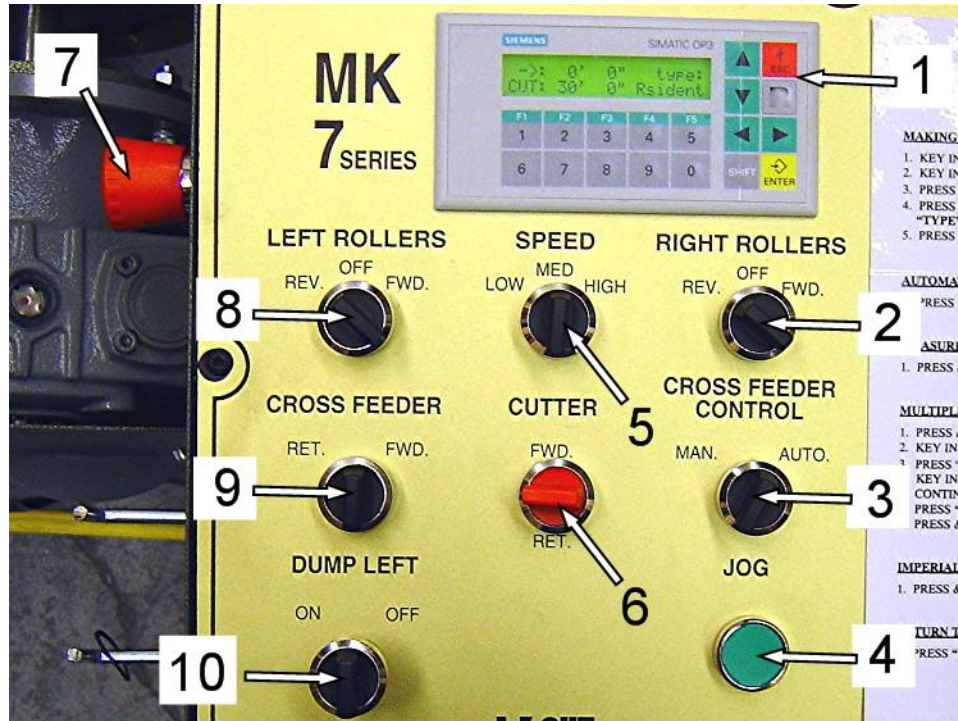
NOTES:

- Due to the configuration of the Bladeholder, you should be able to use all four corners of each Blade before disposing of them.
- The Setscrews on the Bladeholder should be checked to ensure that they are tight at least once a day. Activation of the Bladeholder coupled with numerous cuts can cause the Setscrews to loosen over time, which would result in your Bladeholder not performing as intended.



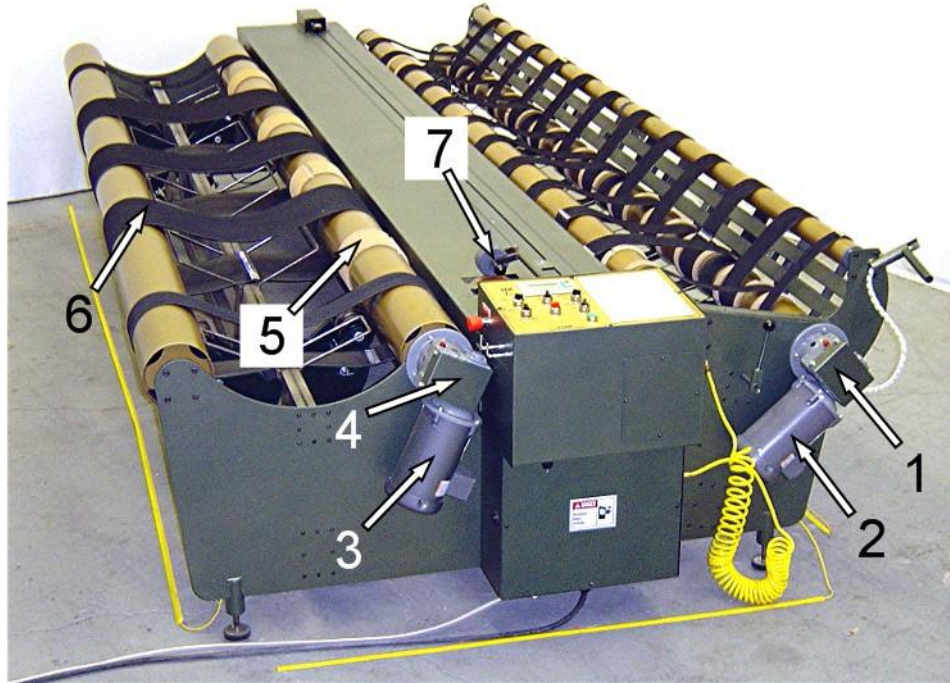
MK-7 PARTS LIST

Control Panel



KEY	PART NUMBER	QTY	DESCRIPTION
1	LGPBF100	1	Counter, Green screen
2	SWITCH-ROL-T	1	Right Roller Switch, Top
3	N/A	1	N/A
4	SWITCH-JOG-T	1	Jog Button, Top
5	SWITCH-ROL-T	1	Roller Speed Selector, Top
6	SWITCH-CUT-T	1	Cutter Switch, Top
7	N/A	1	N/A
8	SWITCH-ROL-T	1	Left Roller Switch, Top
9	N/A	1	N/A
10	N/A	1	N/A

Front And Top Of Machine - Motors And Belts

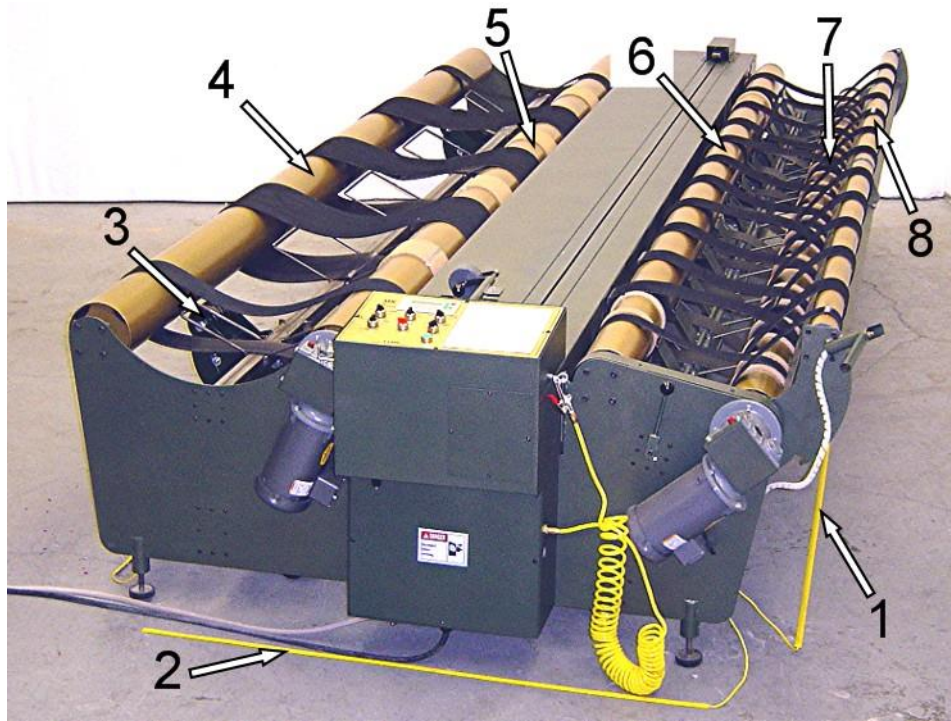


KEY	PART NUMBER	QTY	DESCRIPTION
1	EOVM50-50	1	Right Side Gearbox, 50:1
2	VM3112	1	Right Side Motor, Baldor, 3/4hp, 220v
3	VM3112	1	Left Side Motor, Baldor, 3/4hp, 220v
4	EOVM50-60	1	Left Side Gearbox, 60:1
5	See Belt List	31	Tan Glued On Belts, Right And Left Sides Of Machine
6	See Belt List	30	Black Laced Belts, Right And Left Sides Of Machine
7	N/A	1	Counter Weight Wheel

Belt List – Measure Belt On Machine To Confirm Length And Width

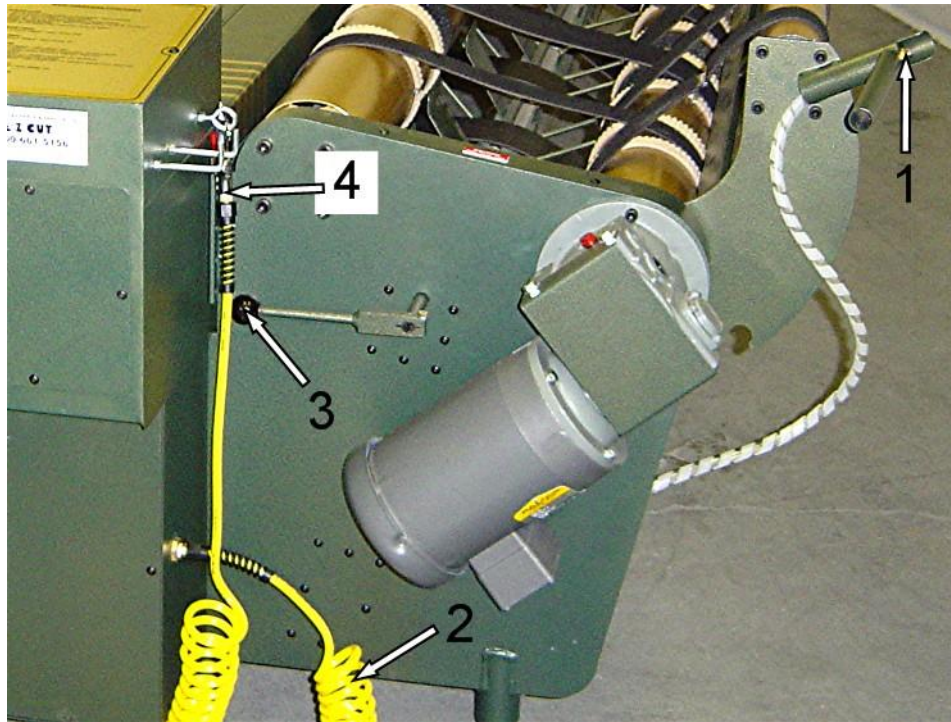
PART NUMBER	QTY	SIZE AND DESCRIPTION OF BELTS
CPUL12X73.5	5	Left Side Black Laced Belt, 12” Wide And 73.5” Long
CPUL4X73.5	1	Left side Black Laced Belt, 4” Wide And 73.5” Long
CPUL4X51.25	11	Right Side Black Laced Belt, 4” Wide And 51.25” Long
CPUL2X51.25	1	Right Side Black Laced Belt, 2” Wide And 51.25” Long
CPUL4X36	11	Right Side Black Laced Belt, 4” Wide And 36” Long
CPUL2X36	1	Right Side Black Laced Belt, 2” Wide And 36” Long
RT6X19.125	4	Left Side Tan Glued On Belt, 6” Wide And 19.125” Long
RT1X17.5	27	Right Side Tan Glued On Belt, 1” Wide And 17.5” Long

Front And Top Of Machine – Tapeswitch And Rollers

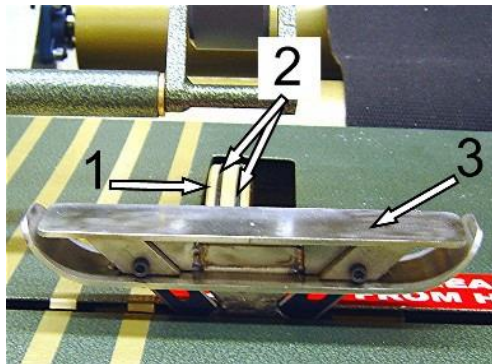


KEY	PART NUMBER	QTY	DESCRIPTION
1	9040-00002-A	2	11' Tapeswitch Pieces, Along Both Sides Of Machine
2	9040-00001-A	1	5' Tapeswitch Piece, Along Front Of Machine
3	N/C	2	Shuttle Assembly, 1 In Front, 1 In Back
4	ROLLER-#1	1	Outside Roller On Left Side
5	ROLLER-#2	1	Inside Roller On Left Side, Connected To Motor
6	ROLLER-#3	1	Inside Roller On Right Side
7	ROLLER-#4	1	Outside Roller On Right Side, Connected To Motor
8	ROLLER-#5	1	Small Rollup Roller On Right Side

Front Right Side Of Machine



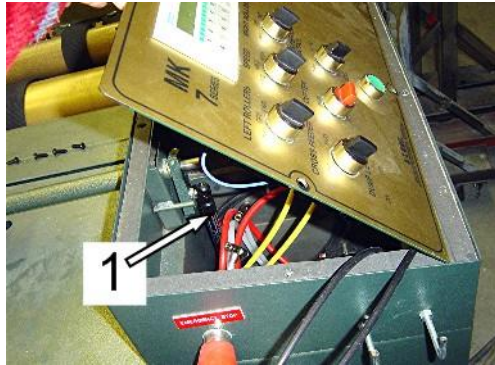
KEY	PART NUMBER	QTY	DESCRIPTION
1	9010-00015-A	1	Right Hand Side Cradle Arm Release Button/Valve
2	9010-00054-A	1	25' Coiled Yellow Air Hose
3	B-6	1	Reverse Roll Pressure Plates Screw On Knob
4	9010-00047-A	1	Compressed Air Blow Gun



Top Of Machine - Bladeholder And Counting Wheel

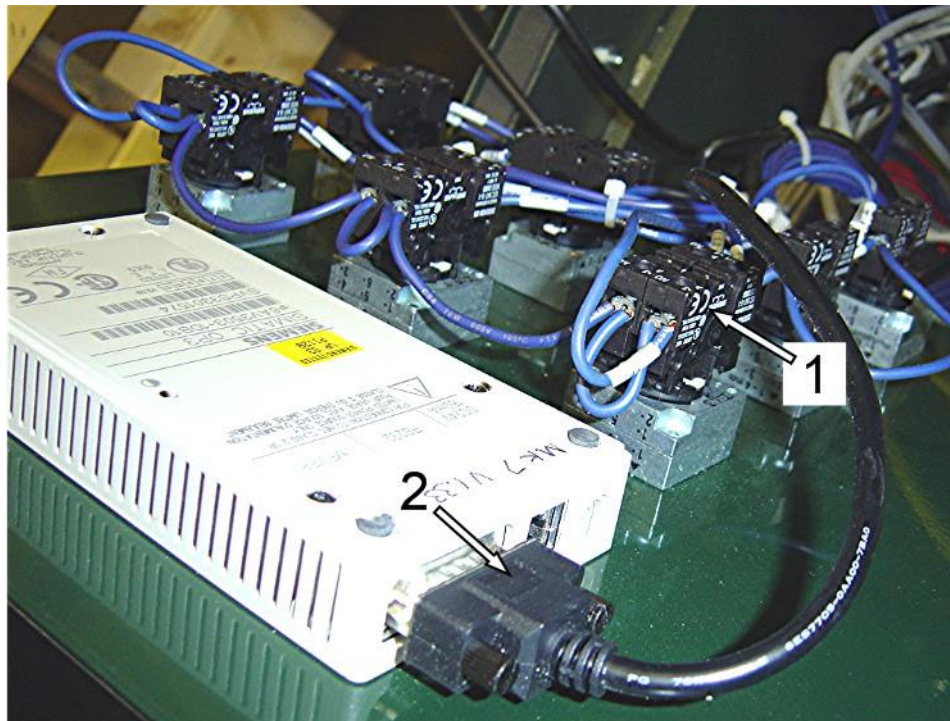
KEY	PART NUMBER	QTY	DESCRIPTION
1	4010-00004-A	1	Counter Wheel
2	ORING	2	O-Rings
3	BH-MK7	1	Bladeholder

Wiring Of Machine, Control Panel



Top Of Machine – Remove Allen Bolts To Get Access To Underside Of Panel

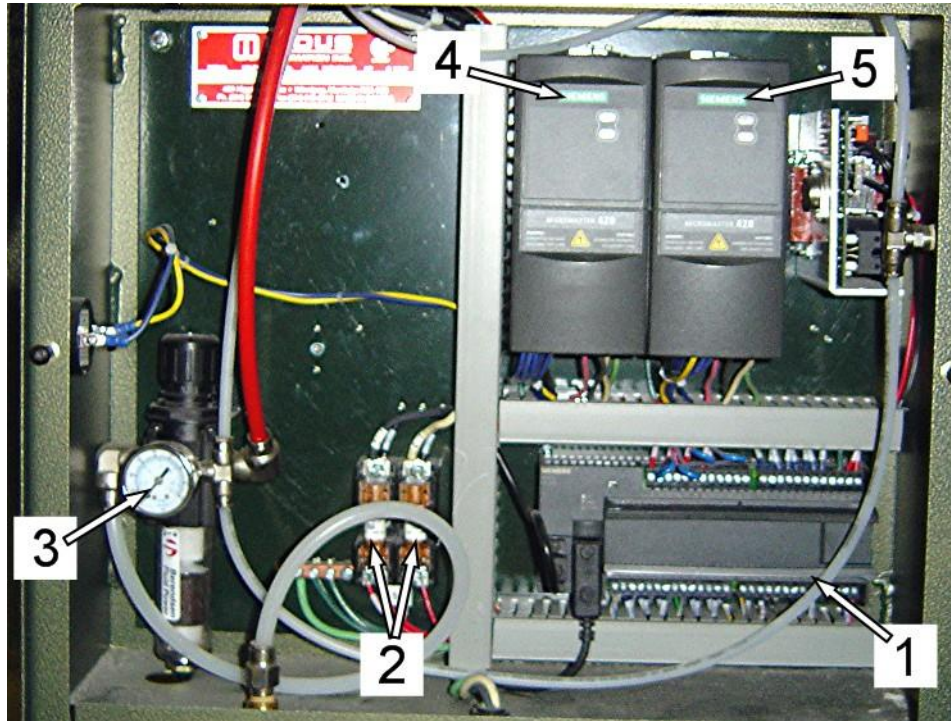
KEY	PART NUMBER	QTY	DESCRIPTION
1	752681	1	150N Gas Spring Shock For Counter Weight Arm



Underside Of Control Panel

KEY	PART NUMBER	QTY	DESCRIPTION
1	Check # On Block	Varies	Contact Block For Switch, Look for HW OR TW #
2	N/A	1	N/A

Wiring Of Machine, Bottom Access Panel Removed



KEY	PART NUMBER	QTY	DESCRIPTION
1	N/A	1	N/A
2	N/C	2	Fuses, Check Amperage On Each Fuse
3	9010-000041-A	1	Air Filter/Regulator, Berendsen
4	FR-E520-075K	1	Left Roller Drive, Mitsubishi 3/4hp
5	FR-E520-075K	1	Right Roller Drive, Mitsubishi 3/4hp